

MAULES CREEK COAL MINE – MONTHLY MONITORING SUMMARY

Site Information

EPL No: 20221

EPA Website Link: [Hyperlink to Maules Creek Coal, Environment Protection Licence](#)

Licensee: Maules Creek Coal Mine Pty Ltd

Licensee Address: Maules Creek Coal Mine, Therribri Road, BOGGABRI NSW 2382

EPL Monitoring Points: See Figure 1 below

Sampling Period: May 2026

Obtained Date: 12th June 2026

Publication Date: 15th June 2026

Context: This Monthly Monitoring Summary aligns with the Environment Protection Licence (EPL) No. 20221 – Maules Creek Coal Mine issued 5th March 2026 by the NSW Environment Protection Authority (EPA).

Monthly Monitoring Summary

Ground Water Monitoring

Table 1 – Groundwater Quality Monitoring

ID EPL (Bore)	Parameters	Units	Frequency	Samples	Date	Laboratory Results Received	Min	Mean	Max / Only Value
15 (BCM01)	pH	pH	Quarterly						
	Conductivity	µs/cm							
	TDS	mg/L							
16 (BCM03)	pH	pH	Quarterly						
	Conductivity	µs/cm							
	TDS	mg/L							
17 (REG10A)	pH	pH	Quarterly						
	Conductivity	µs/cm							
	TDS	mg/L							
24 (RB05A)	pH	pH	Quarterly						
	Conductivity	µs/cm							
	TDS	mg/L							
Next sample June 2026									

Surface Water Monitoring

Table 2 – Surface Water Monitoring – Mine Void

ID EPL (Site)	Parameter	Units	Frequency	Samples	Date	Laboratory Results Received	Min	Mean	Max / Only Value
12 (Mine Void)	TSS	mg/L	Every 2 months	1	25/05/2026	25/05/2026	NA		11
	Conductivity	µs/cm							1590
	Oil & Grease	mg/L							<5
	pH	pH							8.30

Table 3 – Wet Weather Discharge - Surface Water Monitoring

ID EPL (Site)	Parameter	Units	Frequency	Samples	Date	Laboratory Results Received	Min Value	Mean Value	Median Value	Max / Only Value
3 (SD3)	Conductivity	µs/cm	Special Frequency 1 - within 12 hours of discharge from EPL 3 or 36.							
	Nitrate	mg/L								
	Nitrogen (total)	mg/L								
	Oil & Grease	mg/L								
	pH	pH								
	Phosphorous	mg/L								
	Reactive Phosphorous	mg/L								
36 (SD12)	Conductivity	µs/cm	Special Frequency 1 - within 12 hours of discharge from EPL 3 or 36							
	Nitrate	mg/L								
	Nitrogen (total)	mg/L								
	Oil & Grease	mg/L								
	pH	pH								
	Phosphorous	mg/L								
	Reactive Phosphorous	mg/L								
TSS	mg/L									
Conductivity	µs/cm									

No discharge occurred at these locations in May 2026

Table 4 – Clean Water Discharge - Surface Water Monitoring

ID EPL (Site)	Parameter	Units	Frequency	Samples	Date	Laboratory Results Received	Min Value	Mean Value	Median Value	Max / Only Value
38 (Flow Meter Upstream)	Conductivity	µs/cm	Special Frequency 3 - within 12 hours of discharge from any discharge location.							
	Nitrate	mg/L								
	Nitrogen (total)	mg/L								
	Oil & Grease	mg/L								
	pH	pH								
	Phosphorous	mg/L								
	Reactive Phosphorous	mg/L								
TSS	mg/L									
39 (Flow Meter downstream)	Conductivity	µs/cm	Special Frequency 3 - within 12 hours of discharge from any discharge location.							
	Nitrate	mg/L								
	Nitrogen (total)	mg/L								
	Oil & Grease	mg/L								
	pH	pH								
	Phosphorous	mg/L								
	Reactive Phosphorous	mg/L								
TSS	mg/L									
40 (HWD8)	TSS	mg/L	Special Frequency 2 – prior to discharging from EPL 45 and/or 46 or within 12hours of discharge caused by 38.4mm in a 5 Day consecutive period							
	Conductivity	µs/cm								
	Oil & Grease	mg/L								
	pH	pH								
41 (HWD9)	TSS	mg/L								
	Conductivity	µs/cm								
	Oil & Grease	mg/L								
	pH	pH								

No discharge occurred at these locations in May 2026

42 (HWD10)	TSS	mg/L	Special Frequency 2 – prior to discharging from EPL 45 and/or 46 or within 12hours of discharge caused by 38.4mm in a 5 Day consecutive period	No discharge occurred at these locations in May 2026
	Conductivity	µs/cm		
	Oil & Grease	mg/L		
	pH	pH		
43 (HWD11)	TSS	mg/L		
	Conductivity	µs/cm		
	Oil & Grease	mg/L		
	pH	pH		
44 (WCWD)	TSS	mg/L		
	Conductivity	µs/cm		
	Oil & Grease	mg/L		
	pH	pH		

Noise Monitoring

Table 6 – Noise Monitoring (Attended – Measured)

MCC ID	Date	Start Time	Wind Speed (m/s)	MCCP LAeq 15min dB	Limit LAeq 15min (dB) Operations Criteria	MCCP LAeq 1min dB	Limit LA1 (1 min) (dB) Operations Criteria	Weather Rain (mm)	Exceedance (Yes / No)
NM1	14/05/2026	22:30	2.1	IA	35	IA	45	0.0	No
NM2	14/05/2026	23:30	<0.5	23	39	27	45	0.0	No
NM3	14/05/2026	23:17	<0.5	<25	35	<25	45	0.0	No
NM4	14/05/2026	23:00	<0.5	IA	35	IA	45	0.0	No
NM5	14/05/2026	22:00	<0.5	IA	35	IA	45	0.0	No
NM6	14/05/2026	23:57	2.6	IA	35	IA	45	0.0	No

MCC ID = Locations as per the EPL No.20221.

ND = No data due to high prevailing winds during the attended noise monitoring event.

Italicised text indicates wind speed exceeds the 3.0m/s maximum for noise monitoring.

NM = Not Measurable. If site noise is noted as NM, <20 dB or <30 dB, this means some noise was audible but could not be quantified.

IA = Site noise was inaudible at the monitoring location.

N/A in exceedance column means criterion was not applicable due to atmospheric conditions outside those specified in the project approval.

Table 7 - Noise Monitoring (Attended - Low Frequency Assessment)

None of the measurements satisfied the conditions for further assessment when assessed for the applicability of low frequency modification factors in accordance with the EPA's Noise Policy for Industry. Therefore, no further assessment of low frequency noise was required to be undertaken.

Blast Monitoring

Table 8 – Blast Monitoring (Blasts – Limits Apply)

Location	Parameter	Units	Frequency	Number	Average	Max	100% Limit	Exceedance (Yes / No)
Operations Blasts	Overpressure	Db (Lin Peak)	All	7	94.47	106.9	120	No
	Vibration	mm/s		7	0.20	0.7	10	No

Note: As of March 2018, in accordance with the requirements of the approved variation of EPL 20221; M7.1 blast monitoring results are for four blast monitoring points 31 (BM1), 32 (BM2), 33 (BM3) and 34 (BM4).

Air Quality Monitoring

Table 9 – PM₁₀ (Limits Apply)

ID EPL (Site)	Sample period	Unit	Parameter	Rolling Annual Average	NEPM Annual Criteria	Exceedance (Yes / No)
18 (TEOM1)	Continuous	µg/m ³ month	PM ₁₀	10.5	30	No
37 (TEOM3)	Continuous	µg/m ³ month	PM ₁₀	12.6	30	No
19 (HVAS)	6 days	µg/m ³	PM ₁₀	14.3	30	No

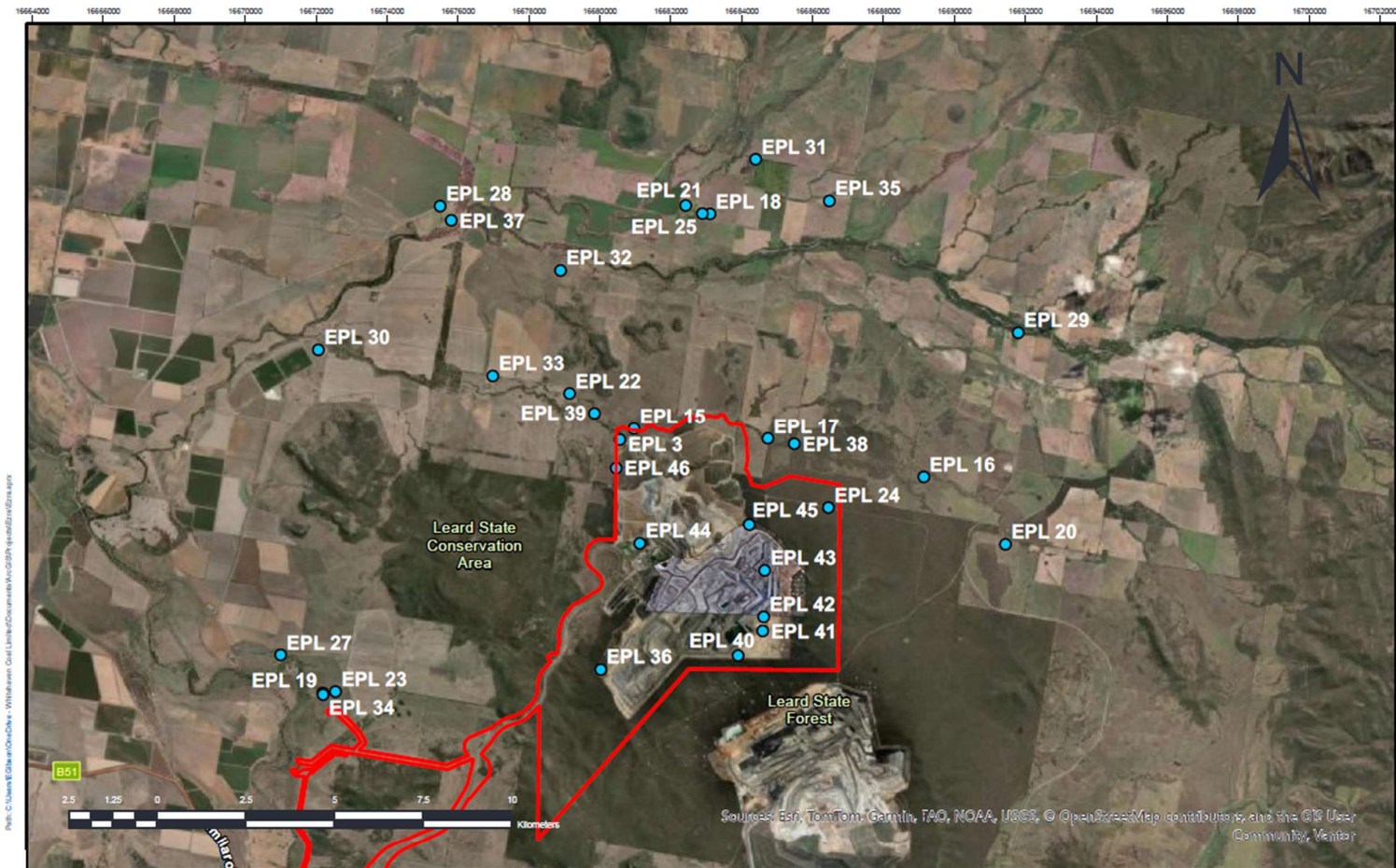
Table 10 – Depositional Dust (Limits Apply)

ID EPL (Site)	Sample period	Particulates Deposited Matter	Rolling Annual Average Insoluble Solids	Criteria	Exceedance (Yes / No)
20 (DDG1/MC1)	Monthly	g/m ² month	2.1	4	No
21 (DDG2/MC2)	Monthly	g/m ² month	1.3	4	No
22 (DDG3/MC3)	Monthly	g/m ² month	1.9	4	No
23 (DDG4/MC4)	Monthly	g/m ² month	1.3	4	No

Table 11 – HVAS

ID EPL (Site)	Sample Date	24hr Result	Rolling Average	NEPM Annual Criteria
19 Olivedene	1/5/2026	16.7	14.4	30
	7/5/2026	5.6	14.4	30
	13/5/2026	7.2	14.4	30
	19/5/2026	<0.1	14.2	30
	25/5/2026	16.3	14.4	30
	31/5/2026	1.6	14.3	30

Figure 1 – EPL 2021 Monitoring Location



EPL 2021 Monitoring Locations - 16/03/2026

- EPL Monitoring Locations
- Mod 9 Boundary

Maules Creek Coal



Scale: 1:143,695
 Date Created: 17/03/2026
 Spatial Reference:
 WGS 1984 Web Mercator Auxiliary Sphere

Disclaimer: Map for reference only and subject to survey. MCC makes no guarantee of the accuracy of this map and data within. MCC shall have no liability for any decisions made or actions taken based upon this map.